



The Scholars Programme 2019-20

The Brilliant Club is an award-winning charity that exists to increase the number of pupils from under-represented backgrounds progressing to highly-selective universities. We do this by mobilising the PhD community to share its academic expertise with state schools.

The Scholars Programme works in partnership with non-selective state schools across England, Wales, Scotland and Northern Ireland. In 2018-19 we will work with over 13,000 in over 750 schools. The programme is available for pupils in key stage 2, 3, 4 and 5.

The Scholars Programme gives an experience of university-style learning. Small groups of pupils are supported by a PhD-level tutor over the course of a term to complete a university-style module culminating in a final assignment. These in-school tutorials are complemented by two trips to highly-selective universities.



Available Terms

Autumn

October - February

Spring

January - May

Summer

March - July

Programme Structure

University Launch Trip

Meet tutor

Tutorial 1

Study skills

Information, advice and guidance

In-School tutorials

Tutorial 2

Tutorial 3

Tutorial 4

Tutorial 5

Draft assignment submitted

Tutorial 6

Usually once a week, according to school availability

Final Assignment

Submission

Tutor marking

National moderation

Tutorial 7

Tutorials 6 and 7 are one-to-one feedback for pupils

University Graduation Trip

Certificates

Information, advice and guidance

Options for parents to attend

School Impact Reports

Pupil Selection

The programme is academically rigorous and we ask that teachers select pupils who will benefit most from the challenge of working at a level above their current key stage. As a minimum we require 55% of pupils on the programme meet one of three measures:

- Eligible for Pupil Premium
- No parental history of Higher Education
- Lowest two quintiles of the IDACI (pupil postcode data)

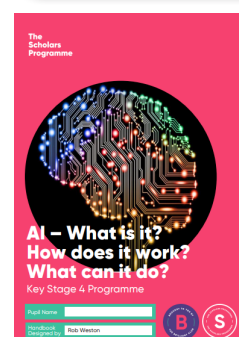
55%

Academic Courses

We recruit, train and support researchers to create a short course based on their own area of research. These courses are delivered to key stage 4 and 5 pupils. For younger pupils in key stage 2 and 3, we have developed a range of pre-designed courses for our researchers to deliver. All courses are supra-curricular. Final assignments are marked with a university-style mark scheme (1st, 2:1, 2:2).



Course Examples



Impact and Reporting

At the end of each programme, we provide a tailored Impact Report to each school. Pupils' attainment on the programme is tracked using our six university readiness competencies – a research based-framework for assessing skills that are likely to support progression to highly-selective universities.

University Readiness Competencies

Programme Attainment	Written Communication	Subject Knowledge	Critical Thinking
Pupil Self-Report Assessments	Meta-Cognition	Motivation and Self-Efficacy	University Knowledge

Outcomes for Pupils

For the last three years, The Brilliant Club has worked with the Universities and Colleges Admissions Service (UCAS) to evaluate the impact of its programmes on progression to highly-selective universities.

The UCAS data shows that pupils who completed The Scholars Programme were significantly more likely to progress to a highly selective university.

56%

56% of Scholars Programme graduates progress to a highly-selective university, compared to only 30% of pupils with similar backgrounds. The progression rate is nearly as high for pupils with Ever6FSM: 52% progressed to a highly-selective university.

To find out more about The Brilliant Club's Research and Impact, click [here](#).

Significantly more likely to **apply** to a highly-selective university

Significantly more likely to **receive an offer** from a university

Significantly more likely to **progress** to a highly-selective university

School Contributions

Schools contribute £160 per pupil to run The Scholars Programme. This cost is subsidised through contributions from our university partners and external grants and donations. This covers all aspects of the programme, other than travel to university trips. Schools frequently use Pupil Premium funds to support running the programme.

Autumn

October – February

Planning begins July 2019

KS5

8 pupils (£1,280) per placement

KS4

12 pupils (£1,920) per placement

Spring

January – May

Planning begins November 2019

KS5

8 pupils (£1,280) per placement

KS4

12 pupils (£1,920) per placement

Summer

March – July

Planning begins January 2020

KS2

12 pupils (£1,920) per placement

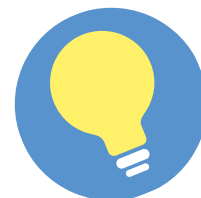
KS3

12 pupils (£1,920) per placement

We can arrange phone calls or meetings with our team to discuss the level of provision that might work best for your school priorities, namely which key stages you wish to target and how many pupils.

Sign Up for 2019-20 Placements

Sign up for 2019-20 across England, Wales, Scotland and Northern Ireland is now open. We advise schools to sign up as soon as possible in order to secure places. To find out more and to get in touch with a member of the team, please fill out our [enquiries form](#) or email us at tspschools@thebrilliantclub.org.



Course Examples

